

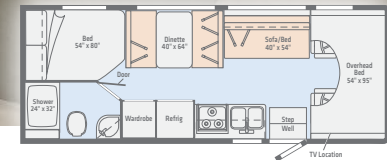


OUTLOOK

WINNEBAGO



On the Cover: Ruby Standard Graphics
Interior: Mystic with Glazed Kona Cabinetry



Full-featured,
family-friendly,
and ready to roll

Meet the Outlook[®], the groundbreaking new Class C motorhome that's fully equipped and priced to fit almost any budget. Built on Ford[®]'s proven E350 and E450 chassis, the Outlook's five well-appointed floorplans include up to two slideouts, and range in length from 24'2" to 31'10." Each

floorplan features a full galley, overhead bed and a long list of standard amenities at a friendly price point. When your long day of adventures comes to a close, you can count on a good night of rest in the walkaround queen bed (22C, 27D, 31N).

This brochure features the Outlook 25J floorplan

Mystic with Glazed Kona Cabinetry



Lounge HDTV



Sofa



Dinette



Shades



Each of the five Outlook floorplans features a dinette or dinette and sofa bed that provide comfortable seating for meals, family time, or taking in a movie on the 32" HDTV. Efficient LED lighting, tinted windows, pleated night shades and the blackout cab divider curtain let you control the light levels in your coach, while well-placed USB chargers keep the juice flowing to phones, tablets, and other devices.

Outlook | Galley

The Outlook's well-equipped galley makes cooking a delight. A three-burner range is standard, as is a touch-controlled microwave and two-door residential-style refrigerator. After-meal cleanup is also easy thanks to the recessed double-bowl sink and attractive thermoformed countertops.



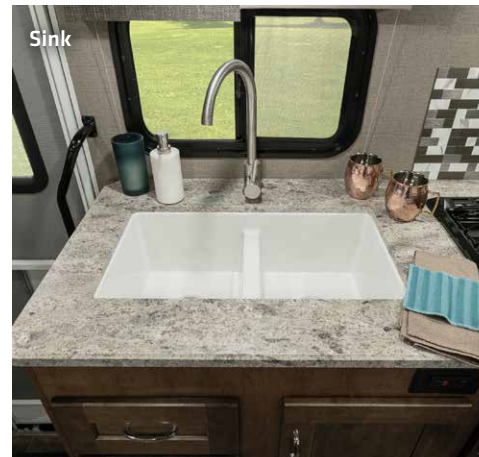
Galley



Refrigerator



Microwave



Sink



Full-Extension Drawer Slides



With either a double or walkaround queen bed (22C, 27D, 31N), the Outlook's rear bedroom offers a quiet refuge away from the day's activities. Up front, the standard cabover bunk, convertible dinette, and sofa/bed (25J, 31N) provide additional sleeping capacity for family members or guests.





Bathroom



Shower



Vanity



Powered Roof Vent

Every Outlook bathroom features a shower with flexible showerhead, powered roof vent and a skylight for a touch of natural lighting.



Dash

The Outlook cab is designed to keep you comfortable and alert through the long haul. The cab seats feature armrests, fixed lumbar support and multi-adjustable slide/recline functions, while the 3-point seat belts and driver and passenger airbags enhance safety. Power steering with tilt and cruise control, power door locks, and a 12-volt powerpoint are all standard equipment as well.



Mirror

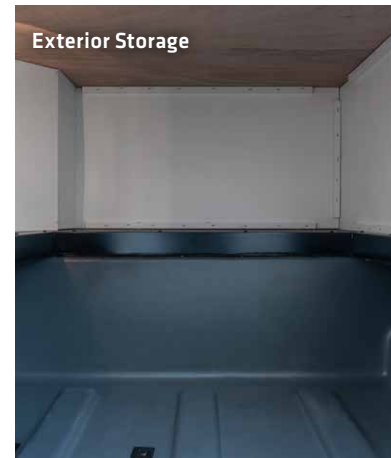
Powered Patio Awning



The Outlook's enhanced finish fiberglass skin not only looks terrific, it's also designed to stand up to the wear and tear of the open road. Attractive, functional running boards are standard, as are the large lighted trunk storage compartment and ladder. Once in camp, deploy the powered patio awning with energy-efficient LED lighting, then kick back, relax, and make yourself comfortable – with your Winnebago Outlook.



Side Screen Door



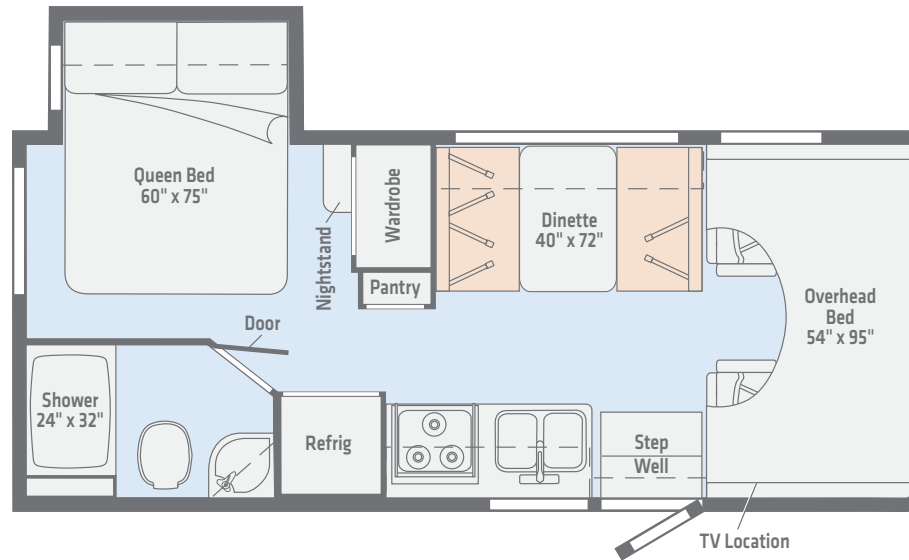
Exterior Storage



Exterior Service Center

22C

With a single slideout, this full-featured floorplan includes a walkaround queen bed, comfortable dinette, and a cozy cabover bunk all in a compact, easy-to-drive coach.



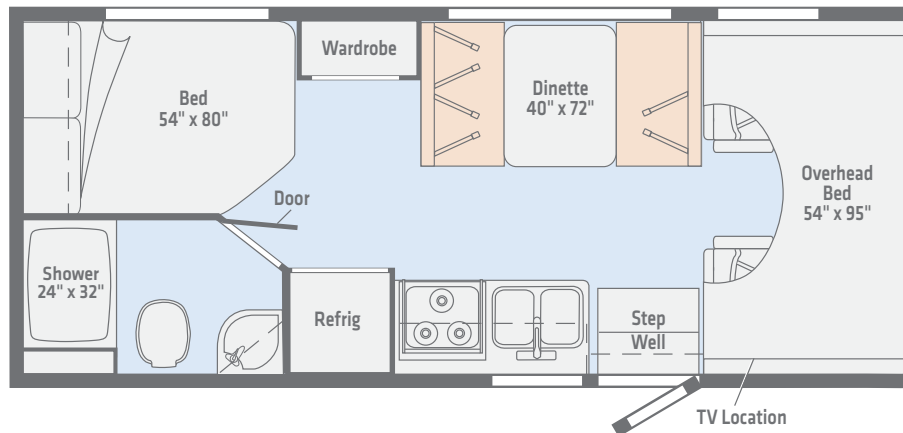
Length 24'2"
Seating 5



Dimensions shown are for sleeping and shower space only and may vary due to styling differences. Dashed lines denote overhead storage areas. Floorplans and specifications are also available online at WinnebagoInd.com.

22E

The corner queen bed keeps things simple, but the compact 22E still packs a punch with a floorplan that's both functional and attractive.



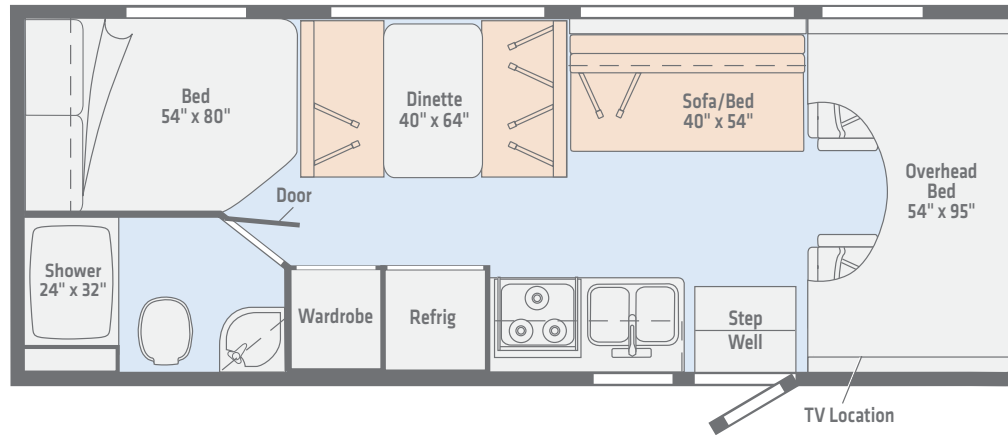
Length 24'2"
Seating 5



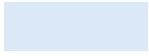
Dimensions shown are for sleeping and shower space only and may vary due to styling differences. Dashed lines denote overhead storage areas. Floorplans and specifications are also available online at WinnebagoInd.com.

25J

With both a dinette and sofa/bed, the 25J seats and sleeps more than its smaller brethren, yet still retains the Outlook's trademark style and functionality.




Leatherette

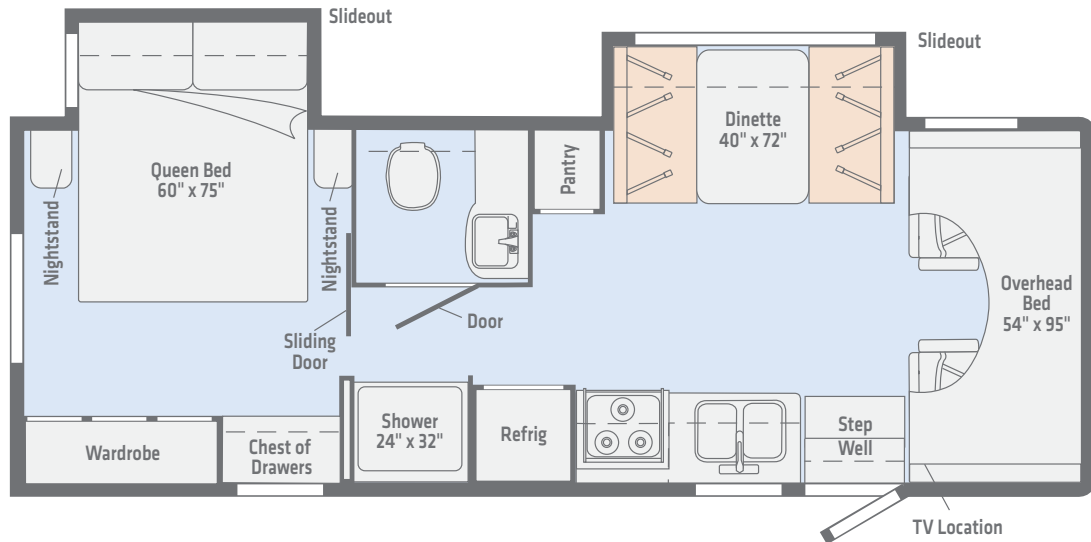

Vinyl

Length 26'2"
Seating 6

Dimensions shown are for sleeping and shower space only and may vary due to styling differences. Dashed lines denote overhead storage areas. Floorplans and specifications are also available online at WinnebagoInd.com.

27D

Two slideouts and a midcoach split bath provide the 27D with a separate lounge/dining area and added space and privacy for the rear master bedroom.

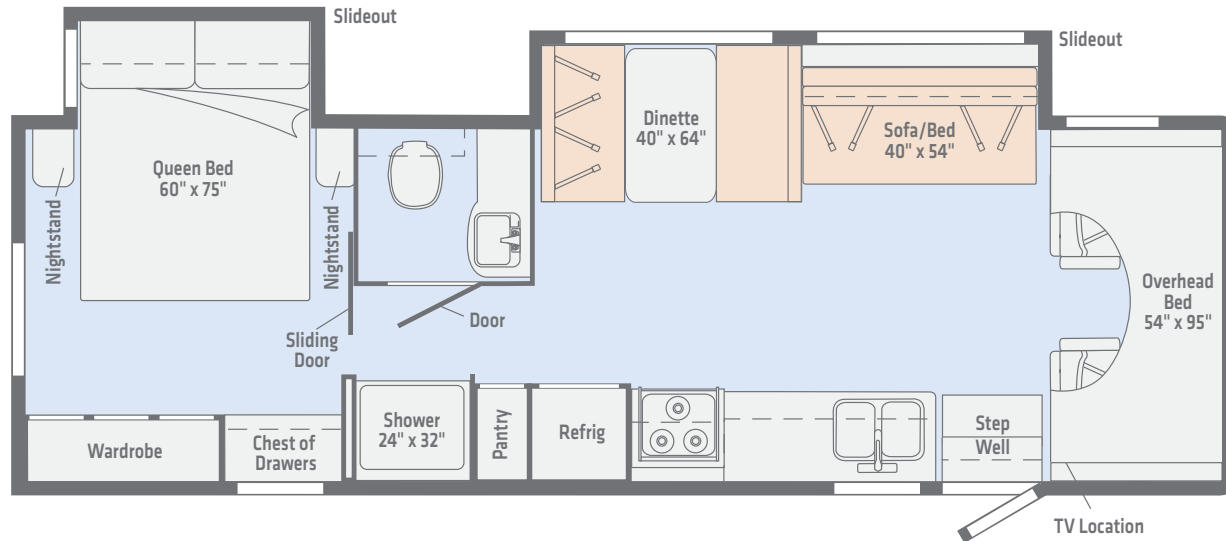


Length 28'8"
Seating 6

Dimensions shown are for sleeping and shower space only and may vary due to styling differences. Dashed lines denote overhead storage areas. Floorplans and specifications are also available online at WinnebagoInd.com.

31N

With its larger front slideout, the 31N incorporates both a dinette and sofa/bed in the main living area, while offering a large rear bedroom set off by the midcoach split bath.



Length 31'10"
Seating 6

Dimensions shown are for sleeping and shower space only and may vary due to styling differences. Dashed lines denote overhead storage areas. Floorplans and specifications are also available online at WinnebagoInd.com.

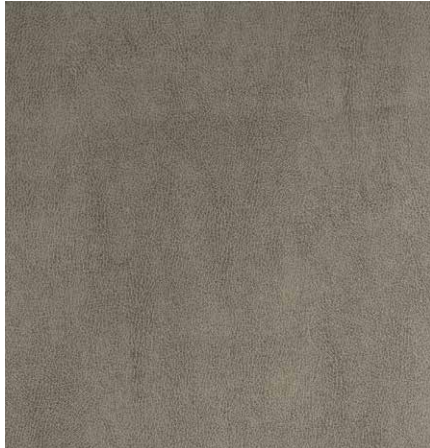


Ruby
STANDARD GRAPHICS



Deep Sky
STANDARD GRAPHICS

Mystic



Leatherette



Leatherette Accent



Feature Fabric



Vinyl Flooring



Bedsread



Wall Board



Laminate Countertop



Backsplash

Wood



Glazed Kona

Winnebago® reserves the right to change décor materials and specifications without notice or obligation.

The Holcombes

Peter, Kathy, and Abby have been full-time RVing since 2014. Using photos and videos shot by Peter, a professional photographer, the family has documented their many adventures around the continent including hiking, paddling, climbing, canyoneering, fishing, and more. All from the comfort of their Winnebago.

You can follow their journey at WinnebagoLife.com. You'll also find hundreds of other great stories from GoLife's outstanding contributors, along with how-to articles, gear reviews, RVing tips, and much more.



To learn more about the Holcombes' adventures, visit:



WinnebagoLife.com/about



Weights & Measures	22C	22E	25J	27D	31N
Length ⁷	24'2"	24'2"	26'2"	28'8"	31'10"
Exterior Height ¹	10'9"	10'9"	10'9"	10'10"	10'10"
Exterior Width ²	8'5"	8'5"	8'5"	8'5"	8'5"
Exterior Storage ³ (cu. ft.)	45.5	51.5	58.5	39.5	50.0
Awning Length	15'	15'	17'	17'	20'
Interior Height ⁸	6'10"	6'10"	6'10"	6'10"	6'10"
Interior Width	8'	8'	8'	8'	8'
Freshwater Tank Capacity ⁴ (gal.)	37	37	37	34	34
Water Heater Capacity (gal.)	6	6	6	6	6
Holding Tank Capacity - Black/Gray ⁴ (gal.)	41/41	41/41	41/41	40/40	40/40
LP Capacity ⁵ (gal.)	18	18	18	18	18
Fuel Capacity (gal.)	55	55	55	55	55
GCWR ⁶ (lbs.)	18,500	18,500	18,500	22,000	22,000
GVWR (lbs.)	11,500	11,500	11,500	14,500	14,500
GAWR - Front (lbs.)	4,600	4,600	4,600	5,000	5,000
GAWR - Rear (lbs.)	7,800	7,800	7,800	9,600	9,600
Wheelbase	158"	158"	182"	182"	220"
Seating Capacity	5	5	6	6	6

Chassis

Ford® E350 Chassis 305-hp 6.8L SEFI Triton V10 engine, TorqShift 6-speed automatic transmission w/overdrive, 155-amp. alternator (22C, 22E, 25J)

Ford E450 Chassis 305-hp 6.8L SEFI Triton V10 engine, TorqShift 6-speed automatic transmission w/overdrive, 155-amp. alternator (27D, 31N)

4-wheel ABS

Trailer hitch⁵ 7,500-lb. drawbar/500-lb. maximum vertical tongue weight

Cab Conveniences

Cab seats armrests, fixed lumbar support, and multi-adjustable slide/recline

3-point seat belts

Airbags driver and passenger

12-volt powerpoint

Power steering w/tilt and cruise control

Power door locks

Sunvisors

Power mirrors w/pivoting arms

Cab mat

Interior

Amplified digital TV antenna system

Pleated night shades

Systems monitor panel

Roof vent (galley and front bunk area)

Blackout cab divider curtain

Tinted windows

Vinyl ceiling

USB charger (dinette and bedroom, 27D, 31N) (dinette, 22C, 22E, 25J)

LED lighting

32" HDTV

Vinyl flooring throughout

Assist bar

Galley

Thermoformed countertops w/decorative backsplash

Microwave oven w/touch control

2-door residential refrigerator/freezer

Pantry (22C, 27D, 31N)

3-burner range top

Recessed double bowl sink

Bath

Shower 24"x32"

Shower curtain

Flexible showerhead

Skylight

Towel ring(s)

Powered roof vent

Toilet w/hand flush

Tissue holder

Robe hook(s)

Towel bar(s)

Bedroom

Double bed w/foam mattress and mattress cover (22E, 25J)

Queen bed w/foam mattress and mattress cover (22C)

Queen bed w/foam mattress and bedspread (27D, 31N)

Wardrobe

Exterior

Enhanced finished fiberglass skin

Running boards

Large lighted trunk storage compartment

Powered patio awning w/LED lighting

Ladder

Heating & Cooling

20,000 BTU furnace (22C, 22E, 25J)

30,000 BTU furnace (27D, 31N)

Coleman®-Mach® 3 A/C (22C, 22E, 25J)

Coleman-Mach 15 A/C (27D, 31N)

Electrical System

AC/DC load center, 55-amp. converter/charger

30-amp. power cord

TV jack and AC receptacle near entrance door

2 Deep-cycle, Group 24 battery

Coach battery disconnect system

Automatic dual-battery charge control

4,000-watt Cummins Onan® MicroQuiet™ generator

Auxiliary start circuit

AC/DC inverter w/remote panel

Cable TV input

Plumbing System

Pressurized city water hookup

On-demand water pump

6-gallon LP water heater w/electronic ignition

Permanent-mount LP tank w/gauge

Gravity tank fill

Water heater winterization by-pass valve

Safety

LP, smoke, and carbon monoxide detectors

10 BC fire extinguisher

Ground fault interrupter

Child seat tether anchor

Warranty⁷

12-month/15,000-mile basic limited warranty⁸

36-month/36,000-mile limited warranty on structure⁸

12-year TPO Roof Membrane Warranty

FOOTNOTES

1. The height of each model is measured to the top of the tallest standard feature and is based on the curb weight of a typically equipped unit. The actual height of your vehicle may vary by several inches depending on chassis or equipment variations. Please contact your dealer for further information.
2. Floorplans feature a wide-body design - over 96". You should be aware that some states restrict access on some or all state roads to 96" in body width. You should confirm the road usage laws in the states of interest to you.
3. The load capacity of your motor home is designated by weight, not by volume, so you cannot necessarily use all available space when loading your motorhome.
4. Capacities are based on measurements prior to tank installation. Slight capacity variations can result upon installation.
5. Capacities shown are the tank manufacturer's listed water capacity (W.C.). Actual filled propane capacity is 80% of listing due to overfilling prevention device on tank.
6. Actual towing capacity is dependent on your particular loading and towing circumstances which includes the GVWR, GAWR, and GCWR as well as adequate trailer brakes. Refer to the chassis operator's manual of your motorhome for further towing information.
7. Increase all lengths by 4" if spare tire is included.
8. Bathroom height is 6'4" on 27D and 31N

NA Not Available

Not all items available in combination. See dealer for details.

Winnebago's® continuing program of product improvement makes specifications, equipment, model availability, and prices subject to change without notice. Published content reflects the most current product information at time of printing. Please consult your dealer for individual vehicle features and specifications.

